



SMCI PMExcellence



SMCI PMExcellence

SMCI PMExcellence Portal is a flexible web based solution that enables organizations to DEFINE and ENFORCE their own Project Management Methodology and Product Delivery Lifecycle Methodology based on world class Project Management Methodologies (**PMI, Prince2 and Oracle PJM**) and world class Product Lifecycles (**Oracle AIM3, Software Development Lifecycle (SDLC) and Microsoft Software Development Lifecycle**).

The **SMCI PMExcellence Portal** proves to be an excellent channel for Project Managers to manage projects and deliver products, for executives to have ongoing access to the status of projects through a Dashboard and the ability to drill into the detail of these projects down to the task level if needed.

Providing a Unified Way of Managing Projects

The benefit of SMCI PMExcellence Portal is to have a reference point that all the organization's project managers refer to for information related to the way the organization runs its projects.

The ability to tailor the methodology to reflect the organizations unique way of managing its projects is a major benefit of PMExcellence.

The information is structured to include the different phases of lifecycles with related activities, process models, roles, and responsibilities of all team members. Finally a repository of all document and form templates (300+ templates).

Providing access to information wherever you are

SMCI PMExcellence Portal is built using Microsoft .NET technology enabling all Project community to access the same repository containing Project Management/Product Delivery Methodologies wherever they are.

Enforcing Project Management Workflow

PMExcellence is not only a repository of information; it is a fully fledged Project Management Portal that enforces the use of a unified Project Management Methodology by means of Workflow technology.

Integrating with Microsoft EPM

SMCI PMExcellence Portal integration with Microsoft EPM provides the means to reflect both the selected Project Management/Product Delivery lifecycle in Microsoft EPM folder structure. The folder structure in the Project Workspace will reflect the chosen Methodology and builds the folders with relevant templates according to the methodology selected.

Ensuring the right fit for your organization

Whilst SMCI PMExcellence Portal is simple and easy to use, we also understand the cultural change associated with introducing new systems. That's why we involve users at every step of the implementation process and can provide customized training, either at SMCI's offices or on-site. And once our software is in place, Customer Support is available to provide all the help you need to get the best from SMCI's unique solution.



SMCI PMExcellence

SMCI Systems Management Consultants International



SMCI PMExcellence Portal Features



Predefined Project Management Methodologies



- SMCI PMExcellence is packaged with several Project Management Methodologies that are world class methodologies that have become de facto standards in their domains e.g PMI, Prince2 and PJM. SMCI PMExcellence presents project lifecycle phases (initiation, planning, execution ...etc) in the case of PMI and (Starting up project, directing a project ...etc) in the case of Prince2 with the associated activities, roles & responsibilities and best practices templates for each methodology.

Predefined Product Lifecycle Methodologies

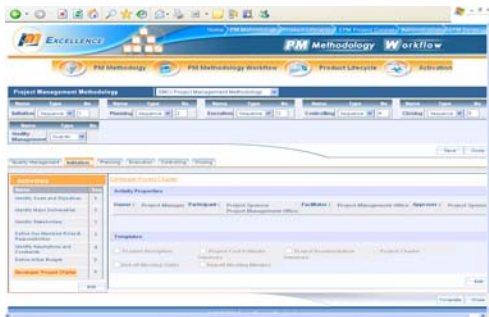


- SMCI PMExcellence is packaged with Product Delivery Lifecycles that are in-line with popular product delivery methodologies such as SDLC, **Oracle AIM3** and Microsoft Development Lifecycle. It presents project lifecycle phases (Definition, operation Analysis ...etc) in the case of AIM3 and (Initiation, System Concept Development ...etc) in the case of SDLC with all the associated activities, roles & responsibilities and best practices templates for each methodology.



SMCI PMExcellence Portal Features

Predefined Project Management Methodologies Workflows



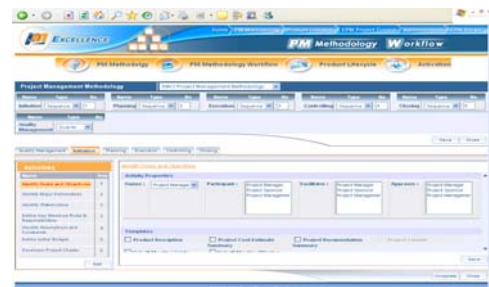
- SMCI is packaged with a defined workflow cycle for each project management methodology
- Predefined sequence of project lifecycle phases
- Predefined sequence of project lifecycle phase activities
- Predefined roles for each project lifecycle phase activities
- Associated templates for each project lifecycle activities

Define your own Project Management and Product Lifecycle Methodologies



- Define new project management and product lifecycle methodologies.
- Define methodology model, processes and lifecycle phases.
- Define activities for each lifecycle phase.
- Define activities, roles and responsibilities for each lifecycle phase.
- Upload templates for each lifecycle phase

Define your own Project Management Methodology Workflow

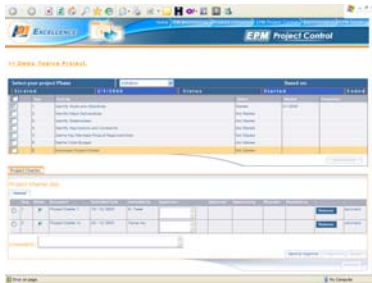


- Define new project lifecycle based on your own defined methodology.
- Define sequence of project lifecycle phases and project lifecycle phase activities
- Define roles for each project lifecycle phase activities
- Associate templates for each project lifecycle activities



SMCI PMExcellence Portal Features

Enforce Project Management Methodology Workflow



- EPM project workspace folder structure reflects the project management methodology phases, activities and templates
- EPM project workspace folder structure reflects the product lifecycle methodology phases, activities and templates
- Once you publish your project on Microsoft EPM, project manager should choose the project management methodology that the project should follow.
- Once project is started, an e-mail notification is sent to all defined roles of the workflow with the current activity
- Project manager is enforced to follow the workflow cycle and upload documents for the associated activity. Once document is uploaded it is sent to approval according to the workflow definition
- Once all documents for each activity are approved, the activity is finished and the next activity starts

SMCI PMExcellence Administration Tool



- Define your organization project management methodologies
- Define your organization product lifecycles
- Define Project Management Methodology Workflow
- Activate defined methodologies and lifecycles for users to practice

Integration with Microsoft EPM



- Manage project lifecycle for EPM registered projects

Multilanguage Support

- SMCI PMExcellence by default supports English and Arabic languages, however it can be customized to support German, Italian, French and Spanish languages

Designed for

- Organizations
- PMO Directors and Officers
- Project Managers
- Project Team Members